

The Plascon logo is a red square with a white stylized 'P' shape on the left side, and the word 'Plascon' in white sans-serif font to its right.

Plascon

2025 COLOUR FORECAST

HYBRIDITY



HYBRIDITY

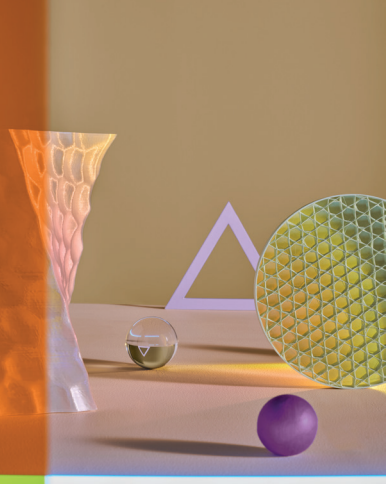
The world is what we make of it

Digital and physical, global and local, past and present, we switch between different worlds constantly in our lives. And that means our colour influences are more varied than ever before too.

We don't have to choose to be any one thing either. We have the freedom to mix, match and mash-up inspiration any way we want. And as a country that has been blending cultures for decades, this is second nature to us in South Africa.

The 2025 Plascon Colour Forecast captures this spirit with its theme of Hybridity. Each of our colour stories is based on the meeting of opposites, and the results are so much more than the sum of their parts. But it's not only the colours that embrace Hybridity – it's the way we're sharing them too.





BRIGHT

Rather than presenting four specific, stand-alone themes, we've broken our selection into colour families: **Bright**, **Neutral**, **Dark** and **Natural**. These are each beautiful palettes in their own right, but that's just the starting point...

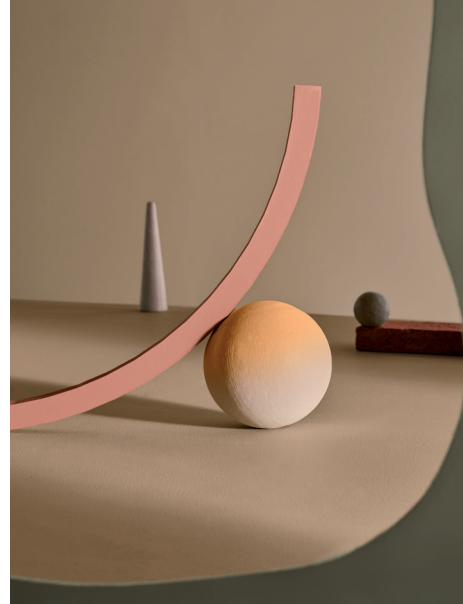
PLASCON
2025 COLOUR FORECAST



NEUTRAL



DARK



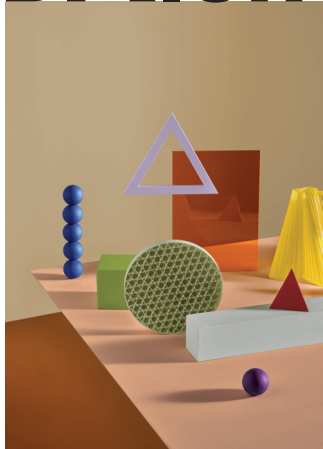
NATURAL

All of the 2025 Forecast colours have been chosen because they can be combined across all of the families too, and our invitation to you is to create your own combinations as you explore possibilities in your own spaces.



EXPLORE MORE

BRIGHT



DIGITAL x PHYSICAL

Our Bright palette embraces the playful irreverence of online culture. From dopamine-boosting tones to digital neons, these colours are confirmed extraverts.



Use them as a set to make a statement in a space or include them as unexpected accents to add a pop of energy. If you just feel like dipping your toe in the water, we've chosen some knocked-back versions too. These can either be paired with their vivid counterparts or used on their own as subtler alternatives with the same spirit.

PLASCON
2025 COLOUR FORECAST



Rain Lily
P1-B2-2

White Night
R7-C2-3

Namaqua Daisy
Y4-A2-1

Good Day Sunshine
O6-A1-1

Lapis Blue
B6-B1-1

Pale Honey
Y2-C1-4

NEUTRAL

HARD x SOFT

Neutrals are a perennial staple, and in this palette we're drawing from new takes on minimalism.



These choices are warmer and more nuanced than we've seen in recent years, with subtle tints that add a welcome sense of depth. In terms of design inspiration, they draw from genderless style, as well as soft industrial interiors, where concrete, wood and steel tones add gentle structure. These colours work beautifully together as a tonal story, but can also be used individually if you're looking for that perfect, on-trend neutral.



River Clay
69

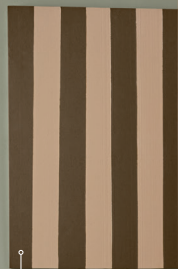
Salt Pebble
4

Black Bean
71

Meadow Yellow
Y4-A2-2

Spiced Cider
O6-C2-2

Light Sage
84



Mother Earth
Y1-E1-1

Show Stopper
102

Canyon Wall
03-C1-3

Pale Honey
Y2-C1-4



Many of these statement bolds play the role of classic black in contemporary design, and the rich jewel and leather tones feel like an old money update for the 21st century. Use this selection all out to create tone on tone spaces with incredible depth, or combine them with picks from the other stories as to add a grounding element. Whatever the case, this is luxury that's unafraid to live out loud.

DARK

PAST x PRESENT

Inspired by the opulence of generations past, our Dark palette feels both timeless and modern.



NATURAL



ORGANIC x MANMADE

Natural colours are increasingly on our mind as we try to find ways to live as a part of the world, not apart from it.

More and more, the materials we use to build and create are inspired by nature – and so are their hues. These essential colours connect us to something bigger than ourselves and feel certain when things around us are overwhelming. Use this selection together for a calming effect, or include them in other palettes when you want to draw on their grounding feeling.



PLASCON
2025 COLOUR FORECAST



Acacia
86

Mystic Copper
03-C1-1

Tuscan Wall
Y1-B1-2

Buttery
89

Spiced Cider
06-C2-2

CREDITS AND A LIST OF BRANDS FEATURED

BRIGHT

Chair and lamps from Bofred. Coffee table from Xandre Kriel. Rugs from Herringbone. Glass side table by Miniforms from Inova Concept Store. Side table from Ben Kennedy. Chair from Haldane Martin. Bench from Sofa Company. Chair from DEFT.

DARK

Couch from Sofa Company. Chair from Bofred. Rug from Herringbone. Plinths from Okhre Collective. Sculpture by Retience Studio. Vase from Country Road.

NATURAL

Ceramic vessels by Jade Paton. Wooden plinths from Design Afrika. Rugs from Herringbone. Vase from Coricraft. Table from James Mudge. Side table from Bofred. Chair by Arper from Inova Concept Store.

NEUTRAL

Chair and table from MÜVEK. Pantan chair from Créma Design. Lamp from Design Afrika. Artwork by Rodan Kane Hart. Side table from Bofred. Armchair from Curación Collection.

Concept and creative direction by ITI, production design and curation by LOOKBOOK Studio

TINT THE COLOUR YOU WANT IN A QUALITY YOU KNOW WILL LAST

INTERIOR



Kitchens & Bathrooms
Washable matt



Polvin
Smooth matt



Cashmere
Plush matt



Double Velvet
Velvet sheen

DOORS & TRIMS



Super Universal Enamel
High gloss



Velvago Enamel
Satin sheen



Velvago Waterbased
Satin sheen

EXTERIOR & ROOF



Micatex
Textured matt



Wall & All
Low sheen



Polvin
Smooth matt



Nuroof Cool
Low sheen

BRIGHT

Lapis Blue B6-B1-1

Passion Red 101

Plum Sensation P4-B1-1

Rain Lily P1-B2-2

Stylish Lime Y7-A1-1

Green Glass 81

Good Day Sunshine O6-A1-1

Morning Crescent O6-A2-1

Crazy Daisy Y4-A1-1

Namaqua Daisy Y4-A2-1

Frozen Limeade Y7-A2-3

NEUTRAL

River Clay 69

Spiced Cider O6-C2-2

White Night R7-C2-3

Salt Pebble 4

Evening Mist 1

Meadow Yellow Y4-A2-2

Cream of Mushroom 32

DARK

Black Bean 71

Black Beard B7-E1-1

Beautiful Brown Eyes R3-E1-1

Rhine Castle 54

Mother Earth Y1-E1-1

Show Stopper 102

Mystic Copper O3-C1-1

NATURAL

Light Sage 84

Bauhaus Y2-E2-1

Canyon Wall O3-C1-3

Tuscan Wall Y1-B1-2

Buttery 89

Pale Honey Y2-C1-4

Acacia 86



PLASCON ADVISORY SERVICE
0860 20 40 60
advice@kansaiplascon.co.za



EXPLORE MORE